



Conference Fee  
Discount By  
February 15, 2026

## **NTI 2026 CONFERENCE**

**DEAUVILLE, FRANCE and the  
BEACHES OF NORMANDY**

***HOTEL BARRIERE LE NORMANDY***  
**JULY 25- AUGUST 2, 2026**



## DEAUVILLE AND THE BEACHES OF NORMANDY

Just two hours from Paris is **Deauville**, one of France's most glamorous, internationally renowned seaside resorts, which attracts a chic crowd of celebrities and tourists year round. This resort town is home to the American Film Festival, various international polo and horse-racing events, and rich in activities for everyone - tennis, seawater spa treatments, water sports, and cultural pursuits. Deauville, together with Trouville and Cabourg, provide the basis for the Norman coastal resort of Balbec in Marcel Proust's "*Search for Lost Time*," and there are many references to the famous intellectuals around the town.

**Hotel Barriere Le Normandy** is the legendary Anglo-Norman mansion that rises up just minutes away from the sea and Deauville's famous Les Planches Promenade and Deauville Casino. This iconic hotel is the perfect base for discovering Deauville, the most elegant resort on Normandy's coast. Inside the hotel and within easy reach, enjoy a mosaic of gourmet, sports, and wellness experiences. Foodies will love the refined local cuisine at the La Belle Époque restaurant, the cocktails at the very British Hotel Bar. The hotel features a spa with a pool, sauna, hammam, and fitness center. Whether you are a seasoned athlete or enjoy family activities, golf, tennis, horse riding, padel tennis and a thousand other activities are within reach. Coco Chanel, Charles III, Claude Lelouch and so many more have all helped turn Le Normandy into the one-hundred-year-old legend it is today. For the past 45 years, the American Film Festival has been celebrated annually on the hotel's premises: a new way for Le Normandy to pay tribute to the film industry that has so deeply shaped its history.

**Normandy** is one of the great historic regions of France, sprawling across France's northwestern corner. Due to its geographic position, this region is blessed with a stunning natural beauty that once inspired Maupassant and Monet. Sightseers pack into colorful Rouen, seaside Honfleur, the historic town of Caen, and magnificent **Mont-Saint-Michel** in St. Malo. Simply lose yourself along the spectacular cliff-lined coast or in the green spaces inland, where the closest thing to a crowd is a farmer with his herd of brown-and-white cows. Other important points of interest include France's famous White Cliffs of Etretat, and the historic Bayeux Tapestry.

A critical site is a visit to the **Normandy Beaches and Memorials**, where the Allied Forces commenced the Normandy Landing, a massive surprise attack that was to mark the beginning of the end of the Second World War.





**CALL 888-515-3674 (Extension 1) or FAX 888-552-9749 or  
EMAIL: [conferences@nticpe.com](mailto:conferences@nticpe.com)**

**NTI 2026 CONFERENCE PROGRAM  
HOTEL BARRIERE LE NORMANDY  
DEAUVILLE, NORMANDY, FRANCE  
JULY 25- AUGUST 2, 2026**

<b>Location</b>	Hotel Barriere Le Normandy 38 rue Jean Mermoz Deauville, France Phone: +33 2 31 98 66 22 Web site: <a href="http://www.hotelsbarriere.com/en/deauville/le-normandy">www.hotelsbarriere.com/en/deauville/le-normandy</a>
<b>Airport and Train</b>	3 miles from Deauville Normandie Airport (DOL) 124 miles from Charles de Gaulle Airport (Paris) (CDG) .6 mile from Deauville Trouville Rail Station
<b>Transfers</b>	NTI will be offering participants the option to purchase transfers to and from Deauville Airport and Hotel Barriere Le Normandy (Details to be issued in early 2026)
<b>Weather</b>	"70s" during the daytime and a bit cooler in the evenings
<b>Area Information</b>	Visit: <a href="http://www.deauville.org/fr">www.deauville.org/fr</a>
<b><u>Hotel Information:</u></b>	
<b>Check-in and check-out</b>	Check-in: 5:00 pm Check-out: 10:00am (Surcharges may apply for late check-outs)
<b>Hotel Rating</b>	5-Star
<b>Parking</b>	Underground valet parking at 48 euros per day (subject to change).
<b>Passport Information</b>	<p>The U.S. State Department and the Department of Homeland Security state that all travelers entering or re-entering the U.S. from Europe will be required to carry passports. For additional passport info visit: <a href="http://www.travel.state.gov">www.travel.state.gov</a>.</p> <p>Most European countries require that a U.S. citizen have <u>at least three months remaining on his or her passport</u> from the date on which the person is leaving Europe.</p> <p><b>ETIAS Filing:</b> The European Travel Information and Authorization System (ETIAS) requiring travelers from visa-exempt countries (such as the United States) to complete an online preauthorization before entering most European countries. ETIAS will start operations in the <u>last quarter of 2026</u>. No action is required by U.S. travelers at this point.</p>

**CALL 888-515-3674 (Extension 1) or FAX 888-552-9749 or  
EMAIL: [conferences@nticpe.com](mailto:conferences@nticpe.com)**





**CALL 888-515-3674 (Extension 1) or FAX 888-552-9749 or  
EMAIL: [conferences@nticpe.com](mailto:conferences@nticpe.com)**





**CALL 888-515-3674 (Extension 1) or FAX 888-552-9749 or  
EMAIL: [conferences@nticpe.com](mailto:conferences@nticpe.com)**



**Accommodations:**

The rooms at the Hotel Barriere Le Normandy are just as natural, enchanting and elegant as the region itself. Make yourself right at home in spaces where the walls are decorated with toile de Jouy and the windows give out onto sea or city views or Deauville's gorgeous architecture. Anglo-Norman authenticity blends seamlessly in with modern comforts and peace and quiet for an iconic establishment with a unique atmosphere. Soak up the French and American silver-screen heritage here in the hotel's corridors, and make every moment a classic.

NTI has secured rooms in five categories with very limited availability in each. All rooms have one king bed which can separated into two twin beds.

- Deluxe Seaview
- Prestige
- Terrace Prestige
- Junior Suite
- Prestige Seaview Junior Suite with Balcony

**Deluxe Seaview:** Approximately 301 square feet, with a sea view, unwind in peace, quiet and comfort, where sumptuous fabrics in muted shades reflect the light glinting off the waves, and the Toile de Jouy decor emphasizes the sense of airy spaciousness. Rooms offer one king or two twin bedding based on availability. Maximum 3 persons with an extra bed for a child under 12.



**CALL 888-515-3674 (Extension 1) or FAX 888-552-9749 or  
EMAIL: [conferences@nticpe.com](mailto:conferences@nticpe.com)**



**Prestige:** A larger room with approximately 377 square feet featuring fabrics in refined shades and restful views over the Cour Normande or town. This room is decorated in Toile de Jouy and unfolds in an invitation to recline and relax. Maximum 3 persons with an extra bed for a child under 12. VERY LIMITED AVAILABILITY.



CALL 888-515-3674 (Extension 1) or FAX 888-552-9749 or  
EMAIL: [conferences@nticpe.com](mailto:conferences@nticpe.com)





**Terrace Prestige Room:** With approximately 301 square foot, this enchanting room has its own private terrace for sun loungers and garden furniture to unwind and soak up the fresh sea air. View of gardens. Maximum 3 persons with an extra bed for a child under 12. VERY LIMITED AVAILABILITY.



CALL 888-515-3674 (Extension 1) or FAX 888-552-9749 or  
EMAIL: [conferences@nticpe.com](mailto:conferences@nticpe.com)



**Junior Suite:** Approximately 431 square feet, this exquisite junior suite boasts Toile de Jouy decor. Unwind with the delightful furnishings in the elegant lounge area and the soft, plush comfort of the king-size bed. View of Cour Normande or town. Maximum 3 persons with an extra bed for a child under 12. LIMITED AVAILABILITY.



**CALL 888-515-3674 (Extension 1) or FAX 888-552-9749 or  
EMAIL: [conferences@nticpe.com](mailto:conferences@nticpe.com)**



**Prestige Junior Suite Seaview (with balcony):** Approximately 495 square feet, from this junior suite, soak up this room's sepia tones, elegant woodwork, and velvety fabrics. The room has a large dressing room and separate lounge. Seaview with balcony. Maximum 3 persons with an extra bed for a child under 12. **LIMITED AVAILABILITY.**



**CALL 888-515-3674 (Extension 1) or FAX 888-552-9749 or  
EMAIL: [conferences@nticpe.com](mailto:conferences@nticpe.com)**

## Special Upgrades to Junior Suites

### Hotel Package includes:

- 8-night hotel accommodations including hotel value added tax (VAT)
- 12 meals including:
  - 8 daily buffet breakfasts
  - 2 buffet lunches, and
  - 2 dinners at the hotel's restaurants
- Walking tour of Deauville

### HOTEL PACKAGE COST- 9 DAYS/ 8 NIGHTS:

		(Per Person) Double Occupancy
<u>Room category</u>		<u>Package Cost**</u>
Deluxe Sea View		\$3,378
Prestige*	<b>ONLY ONE AVAILABLE</b>	\$3,728
Terrace Prestige*	<b>ONLY ONE AVAILABLE</b>	\$3,978
Junior Suite*	<b>SOLD OUT</b>	\$4,502
Prestige Junior Suite Seaview with Balcony*	<b>SOLD OUT</b>	\$5,752
Please ask for rates for single persons.		
Housekeeping service and bellman gratuities are not included in the package cost.		
* Very limited availability		
** Total cost per room, multiply the package cost by 2.		

**Extra person charge:** Children under age 12 are charged \$23 per night for breakfast. Persons age 12 and older: add \$140 per night for rollaway bed and breakfast.

**NOTE: Hotel prices will increase after our first block of hotel rooms and space is exhausted.**

### HOTEL PACKAGE PAYMENT:

With reservations:	\$750 per person (please see reservation form below.)
<b>March 1, 2026</b>	<b>Balance Due in Full</b>

**Hotel prices are subject to change prior to making reservation.**

**Hotel Cancellation:** Refunds for hotel cancellations will be paid, **IN FULL**, if cancellation is made in writing **on or before March 1, 2026**. Any cancellations on or before March 1, 2026 must be made in writing and emailed to [conferences@nticpe.com](mailto:conferences@nticpe.com) or faxed to [888-552-9749](tel:888-552-9749). **No hotel refunds after March 1, 2026.** No refunds for early departures.

**NOTE: Because NTI has a limited number of hotel rooms and meeting space for this conference, all conference participants are required to purchase the hotel package in order to attend the conference.**

**CALL 888-515-3674 (Extension 1) or FAX 888-552-9749 or  
EMAIL: [conferences@nticpe.com](mailto:conferences@nticpe.com)**

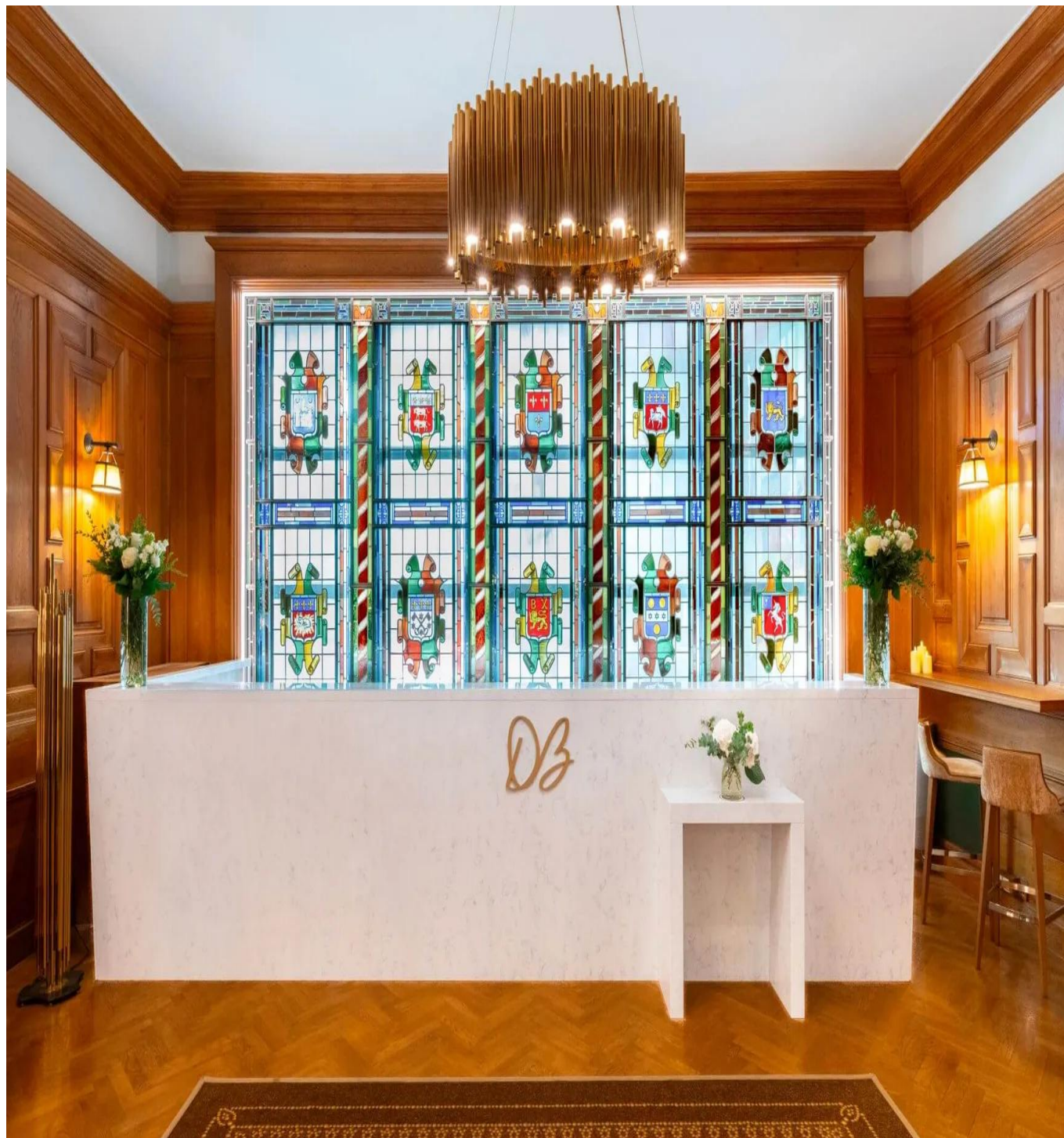


## Hotel Amenities and Services:

### Spa and pool

#### *Spa Diane Barrière*

Treat yourself to the well-being of a tailor-made treatment at the Spa Diane Barrière. A true ode to well-being, energy and serenity, a new way to relax in an incomparable atmosphere. Here, you can relax, laze and find yourself. In a luxurious, authentic setting, the entire Barrière spirit is embodied.



**CALL 888-515-3674 (Extension 1) or FAX 888-552-9749 or  
EMAIL: [conferences@nticpe.com](mailto:conferences@nticpe.com)**

### *Indoor pool*



**Restaurants and Lounges:** The Hotel Barriere Le Normandy boasts several exclusive restaurants and is able to satisfy the most demanding palates. Considered one of the best restaurants in Normandy is the iconic **La Belle Époque**, and is the Hotel's French gastronomic restaurant. **Le Bar du Normandy** provides an intimate atmosphere of an English-style club at Le Normandy. **Ciro's Deauville** offers seaside cuisine where seafood and fish reign supreme. And, of course, **Bar de la Mer** has cuisine laced with seaside flavors.

**La Belle Époque:** An iconic Deauville restaurant nestled in the heart of Le Normandy, La Belle Époque is a celebration of classic French cuisine. Its vast, luminous dining room with large bay windows overlooking the Cour Normande is adorned with crystal chandeliers, moldings and woodwork, and extends out into a terrace that makes for the perfect setting to soak up Normandy's balmy summer weather. Sunday brunch here is an institution in its own right for local foodies and tourists alike.

At La Belle Époque, classic French cuisine is reimaged through a refined selection of exceptional local ingredients, each dish infused with the spirit of Normandy. Signature creations embody the region's timeless elegance, while Christophe Adam's desserts bring each meal to a graceful close, marrying finesse with creative flair. Our thoughtfully curated wine list celebrates the rich diversity of French vineyards, enhancing every moment of your culinary journey.





**CALL 888-515-3674 (Extension 1) or FAX 888-552-9749 or  
EMAIL: [conferences@nticpe.com](mailto:conferences@nticpe.com)**



***Le Bar du Normandy:*** Soak up the intimate atmosphere of an English-style club at Le Normandy. Surrounded by mahogany woodwork and portraits of some very famous faces, dip into an exquisite selection of creative cocktails and premium whiskies. A special place to savor the moment, where each glass has its very own story to tell.



CALL 888-515-3674 (Extension 1) or FAX 888-552-9749 or  
EMAIL: [conferences@nticpe.com](mailto:conferences@nticpe.com)



**Ciro's Deauville:** Experience the seaside cuisine exceptional at *Ciro's Deauville*, where seafood and fish reign supreme. Tuck into exquisite seaside specialties with iconic dishes such as sole meunière and bouillabaisse drawing on freshly-caught produce.



**Bar de la Mer:** Colors that pop, dishes laced with seaside flavors, and a sprawling, sunbaked terrace with sea views—the Bar de La Mer. Partake of hearty, lavish seafood where mouthwatering flavors mingle with gorgeous colors and intriguing textures for an unforgettable foodie experience by the Channel.



CALL 888-515-3674 (Extension 1) or FAX 888-552-9749 or  
EMAIL: [conferences@nticpe.com](mailto:conferences@nticpe.com)



**Town of Deauville:**

**Deauville Casino**



**CALL 888-515-3674 (Extension 1) or FAX 888-552-9749 or  
EMAIL: [conferences@nticpe.com](mailto:conferences@nticpe.com)**



## Deauville Beach



## Horse Racing - France Galop

Leading flat racecourse, Deauville-La Touques with its attractive buildings and Anglo-Norman weighing room, is in full swing during the summer with the Meeting de Deauville Barrière.



CALL 888-515-3674 (Extension 1) or FAX 888-552-9749 or  
EMAIL: [conferences@nticpe.com](mailto:conferences@nticpe.com)



## Deauville Waterfront



## Deauville Downtown



CALL 888-515-3674 (Extension 1) or FAX 888-552-9749 or  
EMAIL: [conferences@nticpe.com](mailto:conferences@nticpe.com)



### NTI TOURS AND TRANSFERS:

***Tours:*** NTI will offer a full set of guided tours that can be purchased by participants. The tours will include visits to the Normandy D-Day Landing Beaches (Omaha and Utah Beaches) Mont St. Michel, Rouen, and other locations. (The tour schedule will be issued in early 2026).

Tentatively scheduled tours will include some of the following locations:

- Walking Tour of Deauville (included in hotel package)
- Day tour to Normandy and D-Day Landing Beaches (Omaha and Utah Beaches)
- Day tour to Mont Saint Michel
- Tour of Rouen
- Tour of Honfleur

***Transfers to and from Deauville Airport:*** NTI will offer optional roundtrip transfers between Deauville Airport and the Hotel Barriere Le Normandy, Deauville. The transfers will be offered on the following dates:

- July 25, 2025: Pickup at Deauville Airport and transfer to Hotel Barriere Le Normandy, Deauville
- August 2, 2025: Pickup at Hotel Barriere Le Normandy, Deauville and transfer to Deauville Airport

Details and pricing of transfers will be available in early 2026.

## SUGGESTED ACTIVITIES:

**The Normandy Beaches:** An inspiring visit to the D-Day Landing Beaches where Allied forces overcame overwhelming odds to alter the course of World War II. The landings are commemorated in monuments, museums and the war graves of nearly 10,000 soldiers who gave their lives. The five beaches part of the D-Day Landing spanned a 50-mile stretch of coastline occupied by the Germans: Utah Beach (United States forces); Omaha Beach (United States forces); Gold Beach (British forces); Sword Beach (Canadian and British forces); Juno Beach (Canadian and British forces).



CALL 888-515-3674 (Extension 1) or FAX 888-552-9749 or  
EMAIL: [conferences@nticpe.com](mailto:conferences@nticpe.com)

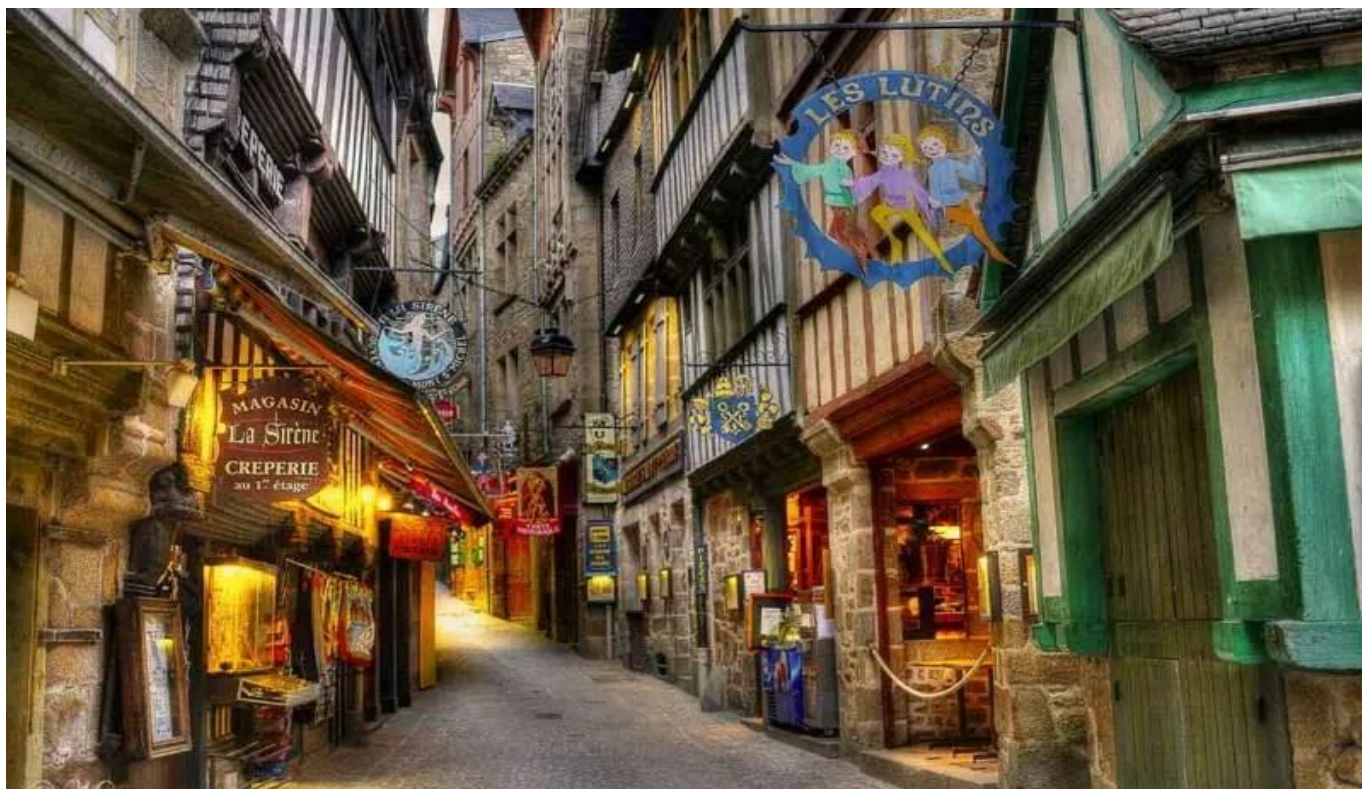




**CALL 888-515-3674 (Extension 1) or FAX 888-552-9749 or  
EMAIL: [conferences@nticpe.com](mailto:conferences@nticpe.com)**



**Mont Saint Michel:** The world famous medieval 10th century abbey is built on a rocky island in the bay and has been separated from the continent for centuries. Other than monuments in and around Paris, Mont Saint Michel is the most visited tourist attraction in France. This remarkable medieval walled city, crowned by its great gothic abbey, is built on a small granite outcrop standing all by itself in the flats of the estuary of the river Couesnon, in an area now known as Mont Saint Michel bay. Mont Saint Michel was one of the first monuments to be classified as a UNESCO world heritage site, as far back as 1979. Le Mont Saint Michel is not just a church on a rock; it is a whole medieval city, one of the few places in France to have preserved intact its medieval walls and defenses.



CALL 888-515-3674 (Extension 1) or FAX 888-552-9749 or  
EMAIL: [conferences@nticpe.com](mailto:conferences@nticpe.com)



**Rouen:** With its quays on the river Seine, its picturesque historic center, with half-timbered houses, an ancient clock, and a magnificent gothic cathedral, Rouen is one of France's great historic cities. The Rouen Fine Arts museum - musée des beaux arts - has a collection of Impressionists, plus a broad collection of old masters from 15th century to the 20th century, including Rubens, Velasquez, Poussin and many more. There is also the Joan of Arc museum. The city also offers a great gothic cathedral, and an interesting medieval clock tower.



**Honfleur:** and is considered to be the birthplace of the Impressionist and Romantic Art movements. This town has managed to preserve the traces of a rich historical past, which make it one of the most visited towns in France. It is world-renown due not only to the authenticity of its narrow, picturesque backstreets, timber-framed house-fronts, little shops, and charming hotels and restaurants, but also to the variety of its monuments and the wealth of its cultural and artistic heritage. The changing light on the Seine estuary inspired Courbet, Monet, Boudin and many others.





### Other towns:

- **Caen:** One of Normandy's most important cities, Caen is a vibrant city on the River Orne and home town of William the Conqueror. Caen was also vital for D-Day and Normandy Landings in World War II. With more than 1000 years of history, Caen has built up an extraordinary architectural and historical heritage including two abbeys, the tomb of William the Conqueror, the Caen memorial museum of the Normandy landings and liberation, and the Chateau de Caen, William the Conqueror's 11th century castle, one of Europe's largest fortresses.
- **Entretat:** The Entretat is best known for its astonishing cliffs, including three natural arches and the pointed "needle." The cliffs are the beach resort below which attracted artists including Eugène Boudin, Gustave Courbet and Claude Monet, and were featured prominently in the 1909 Arsène Lupin novel The Hollow Needle by Maurice Leblanc. Two of the three famous arches are seen from the town, the Porte d'Aval, and the Porte d'Amont. The Manneporte is the third and the biggest one.

### Photos of the Normandy Area





**NTI 2026 CONFERENCE SCHEDULE  
HOTEL BARRIERE LE NORMANDY  
DEAUVILLE, NORMANDY, FRANCE  
JULY 25- AUGUST 2, 2026**

<b>DATE</b>	<b>MEETINGS</b>	<b>SOCIAL EVENTS/TOURS (Tentative)</b>
<b>7/25</b> Saturday	<b>Arrival</b> - no meeting scheduled	Transfers available from airports. ***  6:30-7:30pm: Welcome to Deauville Orientation Meeting- Le Baule room*  Dinner on own.
<b>7/26</b> <b>Sunday</b>	Day of leisure	7:00am- 10:30am: Breakfast- Le Normandy room*  9:30am to 12:00: Walking tour of Deauville*  Lunch on own  7:00pm- 8:00pm: Reception- Deauville room*  8:00pm- 10:00pm: Group dinner at La Belle Epoque dining room*
<b>7/27</b> <b>Monday</b>	7:00am- 10:30am: Breakfast- Le Normandy room* 7:30am-12:50pm meeting- La Baule room <b>Topic: 2026 Individual Tax Update</b> <b>Speaker:</b> Thomas E. Bayer, CPA, CExP CPE Hours: 6 Group Live- Taxes	1:00-2:30pm: Buffet lunch- Deauville room prior to tour*  2:00pm to 7:00pm- Tour TBD**  Dinner on own.
<b>7-28</b> <b>Tuesday</b>	7:00am- 10:30am: Breakfast- Le Normandy room* 7:30am-12:50pm meeting- La Baule room <b>Topic: Business Tax Developments- 2026</b> <b>Speaker:</b> Thomas E. Bayer, CPA, CExP CPE Hours: 6 Group Live- Taxes	Lunch on own.  Dinner on own.
<b>7/29</b> <b>Wednesday</b>	Day of leisure  No meetings scheduled	7:00am- 10:30am: Breakfast- Le Normandy room*  8:30am to 6:30pm: Full-day tour of Normandy and D-Day Landing Beaches**
<b>7/30</b> Thursday	7:00am- 10:30am: Breakfast- Le Normandy room* 7:30am-12:50pm meeting- La Baule room <b>Topic: Family Individual and Business Tax Planning</b> <b>Speaker:</b> Thomas P. Langdon, JD, LLM, CFA, CFP CPE Hours: 6 Group Live- Taxes	1:00-2:30pm: Buffet lunch- Deauville room prior to tour*  2:00pm to 7:00pm- Tour TBD**  Dinner on own.
<b>7/31</b> Friday	Day of leisure  No meetings scheduled	7:00am- 10:30am: Breakfast- Le Normandy room*  8:30am to 6:30pm: Full-day tour of Mont Saint Michel**  8:00pm- 10:00pm: Group dinner at La Ciro's dining room*

**CALL 888-515-3674 (Extension 1) or FAX 888-552-9749 or  
EMAIL: [conferences@nticpe.com](mailto:conferences@nticpe.com)**



<b>8/1 Saturday</b>	7:00am- 10:30am: Breakfast- Le Normandy room* 7:30am-12:50pm meeting- La Baule room <b>Topic: Creative IRA, Life Insurance and Retirement Planning Techniques</b> <b>Speaker:</b> Thomas P. Langdon, JD, LL.M, CFA, CFP CPE Hours: 6 Group Live- Taxes	Lunch on own.  Dinner on own.
<b>8/2 Sunday</b>	Recommended day of departure	7:00am- 10:30am: Breakfast- Le Normandy room*  Morning transfers to airport ***

\* Included in hotel package

\*\* Will be offered as part of optional tour package- details and prices will be issued in early 2026.

\*\*\* The option to purchase transfers will be offered to and from Hotel Barriere Le Normandy and Deauville Airport on the day of arrival (July 25, 2026) and the day of departure (August 2, 2026). Details will be available in early 2026.

**Note:** Breakfast will be served in the hotel's Le Normandy dining room starting at 7:00am for participants. Participants receive 6 CPEs for attending each live session and can receive additional CPEs (equal to the number of CPEs purchased) by completing optional self-study courses. Self-study materials will be available in modules of 2 CPEs and 4 CPEs (taxation and A&A) and will be distributed either by an on-line PDF downloadable format or mailed to you in a manual format in advance of the conference. **Self-study materials will not be distributed at the conference.** Summary of CPEs available at this program: Live Group study= 24 CPEs; Self-Study=16 CPEs for 40 total CPEs.

**CPE BREAKOUT:**

Group live CPE (4 days at 6 CPEs per day)

24 CPE hours

Self-study supplement\*

16 CPE hours

Total CPE

40 CPE hours

\* Distributed either by an on-line PDF downloadable format or mailed to participants in a manual format in advance of the conference.

Hotel restaurant seating times:

Lunch: 1:00pm to 2:30pm

Dinner: 7:30pm to 10:00pm

Breakfast: 7:00am to 10:30am (opens at 7am for the four days of meetings for participants).

**Who Should Attend:** CPAs and other professionals who deal in taxation.

**Details on courses:** Unless otherwise stated, all courses have the following attributes:

***Delivery method:*** The live segments of the program (6 CPE hours per session) are categorized as Group Live, while the self-study supplement (2 to 4 CPEs per session) is categorized as QAS Self Study.

***Program level:*** Update

***Prerequisites:*** General understanding of taxation (tax courses)

***Advance preparation:*** None

**Includes Post-Passage Planning  
of the OBBBA of 2025**

## TOPIC DESCRIPTIONS

### 2026 Individual Tax Update

***Objective:*** To discuss recent developments related to federal income taxation of individuals including new regulations and other changes related to tax reform.

This course focuses on recent 2026 tax developments related to individuals, including tax changes included in new IRS regulations and procedures. Topics include: including new IRS regulations and revenue procedures, practice planning areas, pending changes, and more. Recommended CPEs: 6 hours. Field of study: Taxes

### Business Tax Developments- 2026

***Objective:*** To address recent developments related to the federal income taxation of businesses.

This course addresses tax issues related to businesses including key matters involving C corporations, S corporations, LLCs and partnerships. Topics include: a reassessment the choice of entity, recent regulations and guidance related to pass-through entities, planning for expiring tax provisions, pending changes and tax reform involving businesses, and more. Recommended CPEs: 6 hours. Field of study: Taxes

### Family Individual and Business Tax Planning

***Objective:*** To review tax planning opportunities for families and their businesses.

This course discusses the tax ramifications of the family united and apart. While the nuclear family remains the center point of society, today it is under tremendous economic and social pressure. This course is designed to cover “hot” tax and financial issues that affect our clients and their families.

Topics include: Tax planning for children including IRAs for children, advance use of life insurance for children, planning documents for colleges, and helping children make large purchases such as buying homes.

Planning issues for blended families and alternative lifestyles; Business succession planning for the family business including: getting the business ready for sale/transfer to the next generation, structuring buy-sell agreements, equal vs. equitable dispositions of family businesses and other assets among family members.

**CALL 888-515-3674 (Extension 1) or FAX 888-552-9749 or  
EMAIL: [conferences@nticpe.com](mailto:conferences@nticpe.com)**



Unique planning opportunities for IRC 1202 stock and maximizing IRC 754 step up adjustments; Protecting the family business from the future in-law including pre-marital and post-marital agreements, spendthrift trust provisions, and divorce-peculiar transactions; Family philanthropy and charitable giving including a comparison of donor advised funds vs. private foundations; Family continuity issues following death of a member; Unraveling or modifying family trusts that don't work anymore; Intra-family loans and tax implications, and more. Recommended CPEs: 6 hours. Field of study: Taxes

### **Creative IRA, Life Insurance and Retirement Planning Techniques**

**Objective:** To review tax planning opportunities for IRAs and retirement planning.

We are all (including tax practitioners) getting older, and the need for effective retirement planning has never been greater. This course is essential for participants who wish to attain maximum value from effective tax planning for IRAs, life insurance and other retirement-related assets. Topics include: separated RMD and QCD planning techniques; planning for traditional and Roth IRAs including advanced Roth Conversion strategies, backdoor Roth IRA planning, and rollovers; Maximizing Roth contributions for children; use of self-directed IRAs; Mega Roth Contributions; incorporating longevity insurance and life insurance into a retirement plan; selling old life insurance policies, and more. Recommended CPEs: 6 hours. Field of study: Taxes

**ACCOUNTING AND AUDITING CPE:** If you need accounting and auditing credits, we offer numerous self-study courses that qualify for accounting and auditing credit hours.

## SPEAKER BIOGRAPHIES

### **Thomas E. Bayer, CPA, CExP**

Mr. Bayer has recently become the partner-in-charge of the Indianapolis office of Sikich after spending his entire career serving clients in central Illinois. He has 28 years of experience providing a broad range of accounting, tax, and business advisory services to commercial clients across various industries and Sikich offices.

As both a CPA and Certified Exit Planner (CExP), Tom has specialized expertise in the areas of business succession planning, tax planning and compliance, and business advisory. He puts his business succession planning abilities and knowledge to work firm-wide, serving clients in advisory services across the country. He is a Certified Public Accountant (CPA), a Certified Exit Planner (CExP), and is Certified in Strategic Performance Management (CSPM).

### **Thomas P. Langdon, JD, LLM, CFA, CFP**

Thomas P. Langdon is a professor of Business Law at the Gabelli School of Business, Roger Williams University, and an adjunct professor of taxation at Georgetown University. He is a principal in Langdon & Langdon Financial Services, LLC, a Connecticut based tax planning and preparation firm, and is an attorney admitted to the Connecticut, Pennsylvania, and U.S. Tax Court Bar. He received a BS in finance and an MBA from the University of Connecticut, an MS in Financial Services from The American College, a Juris Doctor (JD) from Western New England College School of Law, and a Master of Laws (LL.M.) in Taxation from Villanova University School of Law. Thomas also holds several designations, including, among others: Chartered Financial Analyst (CFA), CERTIFIED FINANCIAL PLANNER™ (CFP®), Accredited Estate Planner (AEP), Chartered Advisor in Philanthropy (CAP), and Chartered Life Underwriter (CLU). He is also a Fellow of the Life Management Institute. Prior to joining the Gabelli School of Business at Roger Williams University, Mr. Langdon held positions as professor of Taxation at The American College, asset/liability manager for The Travelers Insurance Company Asset Management and Pension Services division, and student law clerk in The United States Federal District Court.

A nationally recognized author of speaker, Thomas has addressed many professional organizations, including the International Association for Financial Planning, The Financial Planning Association (FPA), The Society of Financial Services Professionals, The National Association of Health Underwriters, The National Association of Estate Planners and Councils, and numerous Estate Planning Councils, Bar Associations, CPA Societies, Financial Planning Associations, and local chapters of the Society of Financial Service Professionals (formerly the American Society of CLU and ChFC).

Mr. Langdon has written or co-authored several books, as well as dozens of articles that have appeared in such publications as Financial and Estate Planning Quarterly, Probate and Property. The Probate Practice Reporter, The American Bar Association Small Firm Digest, The Ohio CPA Journal, The Journal of International Taxation, Financial Services Review, The Journal of Financial Planning, The Journal of the Society of Financial Services Professionals, The National Association of Estate Planners and Councils Newsletter, and Best's Review. He has been widely quoted in the business press and has received various awards from the American Bar Association and the Certified Financial Planner Board of Standards for articles he has written. Mr. Langdon's leadership positions include service on the Board of Financial Service Professionals Business and Compensation Planning Section; and Education Committee member of the Financial Analysts of Philadelphia. His community service leadership positions include secretary of the State of Connecticut Task Force on Superfund (CERCLA) Reform; chairman of the Southington (CT) Public Library Board of Trustees; chairman of the Barnes Museum Board of Trustees; and a member of the Southington (CT) Town Council



**Conference Fee  
Discount  
By February 15, 2026**

**CPE Pricing:**

	Up to 24 CPEs	Up to 32 CPEs	Up to 40 CPEs
<b>By February 15, 2026</b>	<b>\$2,397</b>	<b>\$2,498</b>	<b>\$2,599</b>
By June 30, 2026	\$2,497	\$2,598	\$2,699
After June 30, 2026	\$2,597	\$2,698	\$2,799

Cost includes all materials to be distributed on site or electronically.

Group discounts: 10% for 3 or more participants  
20% for 5 or more participants

**Conference Cancellation Policy:** Conference fee will be refunded in full if notice is received in writing **on or before March 1, 2026**. With respect to a cancellation occurring **after March 1, 2026**, no conference fee refund shall be granted for the conference fee, but credit for the conference fee will be given toward a future conference. This policy applies to the conference fee only and not to hotel costs, which have a separate cancellation policy.

For more information regarding concerns and administrative policies, please go to our website: [www.nticpe.com](http://www.nticpe.com) or contact our office at 888-515-3674 (Extension 1).

**Licensing Designations:**



NTI is registered with the National Association of State Boards of Accountancy (NASBA), as a sponsor of continuing professional education on the National Registry of CPE Sponsors. State boards of accountancy have the final authority on the acceptance of individual courses for CPE credit. Complaints regarding registered sponsors may be submitted to the National Registry of CPE Sponsors through its website: [www.nasbaregistry.org](http://www.nasbaregistry.org). NTI NASBA Sponsor Number: 103075

**QAS Self-Study Requirements:** In accordance with the new NASBA Registry - QAS standards, all self-study credit hours are determined based on a 50-minutes-per-CPE-hour measurement and have required feedback questions throughout the course. Credit measurements may vary from state to state. Your State Board of Accountancy makes the final determination of CPE credits. The self-study portion of the courses must be completed within one year of the conference dates.

**CALL 888-515-3674 (Extension 1) or FAX 888-552-9749 or  
EMAIL: [conferences@nticpe.com](mailto:conferences@nticpe.com)**



**Enrolled Agents:** NTI has entered into an agreement with the Office of Professional Responsibility, Internal Revenue Service, to meet the requirements of 31 Code of Federal Regulations, section 10.6(g), covering maintenance of attendance records, retention of program outlines, qualifications of instructors, and length of class hours. This agreement does not constitute an endorsement by the Office of Professional Responsibility as to the quality of the program or its contribution to the professional competence of the enrolled individual.

CPE credits earned by enrolled agents directly to the IRS in accordance with the IRS requirements for CPE providers. Enrolled agents must provide us with their PTIN number so that we may report CPE directly to the IRS.

IRS Approval information: Provider Number: BTYZG

**CFPs:** NTI is registered with the Certified Financial Planner Board of Standards, Inc.

**CLE:** Tax courses qualify for CLE in most states. CLE credit is granted on a scale of 60 minutes per hour versus 50 minutes for CPE. Please ask for details.



# How to Register: HOTEL BARRIERE LE NORMANDY, DEAUVILLE

CALL 888-515-3674 (Extension 1), fax to 888-552-9749 (or email [conferences@nticpe.com](mailto:conferences@nticpe.com)) and register by credit or debit card (MC/VISA) or check. Please return this form to the address at the bottom of the page.

## REGISTRATION FORM

First and last name \_\_\_\_\_ Spouse/companion's name(s) \_\_\_\_\_

Address \_\_\_\_\_

City/Town \_\_\_\_\_ State \_\_\_\_\_ Zip Code \_\_\_\_\_

Telephone \_\_\_\_\_ Facsimile \_\_\_\_\_ Email address \_\_\_\_\_

## CONFERENCE INFORMATION

Check one:	By Feb 15, 2026	By June 30, 2026	After June 30, 2026	Cost includes all materials Conference fees include \$200 France conference surcharge.
_____ 40 CPEs	\$2,599	\$2,699	\$2,799	
_____ 32 CPEs	\$2,498	\$2,598	\$2,698	
_____ 24 CPEs	\$2,397	\$2,497	\$2,597	

Days you are attending: (check all that apply):

Please check	Date	Topic
_____	7-27-26	2026 Individual Tax Update (6 CPEs-Group Live-Taxes)
_____	7-28-26	Business Tax Developments-2026 (6 CPEs-Group Live-Taxes)
_____	7-30-26	Family Individual and Business Tax Planning (6 CPEs-Group Live-Taxes)
_____	8-1-26	Creative IRA, Life Insurance and Retirement Planning Techniques (6 CPEs-Group Live-Taxes)

## HOTEL INFORMATION

<b>Please fill in:</b>	<b>(Nights of July 25- August 1, 2026) (Departure on August 2, 2026)</b>	<b>Please check</b>	<b>(9 days/8 nights) (Per Person) Double Occupancy</b>
Arrival date: _____	<u>Room category</u>		<u>Package Cost**</u>
Departure date: _____	Deluxe Sea View	_____	\$3,378
Cost of extra nights and additional persons: Please call for details.	Prestige	_____	\$3,728
	Terrace Prestige	_____	\$3,978
Minimum stay: 8 nights.	Junior Suite	<b>SOLD OUT</b>	\$4,502
	Prestige Sea View Junior Suite	<b>SOLD OUT</b>	\$5,752
** Total cost per room, multiply the package cost by 2.	<b>Hotel package payment:</b> \$750 per person due with this reservation: Balance due: <b>March 1, 2026.</b> <b>Note: Hotel package costs are subject to change without notice.</b>		

CALL 888-515-3674 (Extension 1) or FAX 888-552-9749 or  
EMAIL: [conferences@nticpe.com](mailto:conferences@nticpe.com)

# REGISTRATION FORM (CONTINUED)- Deauville 2026

**PAYMENT:**

☐ Pay by check  
(mail check to address below)

☐ Charge my credit card:

☐ MC  
☐ VISA

**COST:**

Conference fee \$ \_\_\_\_\_

Hotel deposit # people \_\_\_\_\_ x \$750 = \$ \_\_\_\_\_

TOTAL AMOUNT \$ \_\_\_\_\_

*[Balance of hotel package due March 1, 2026]*

Card number

Exp date

Code

State(s) for which CPE is required: \_\_\_\_\_

I am a (an): ☐ CPA ☐ Atty  
☐ PA ☐ Other  
☐ CFP

I work in: ☐ Public accounting ☐ Industry ☐ Other \_\_\_\_\_

☐ EA (PTIN \_\_\_\_\_)

**SELF-STUDY PACKET:**

Participants receive 6 CPEs for attending each live session and can receive additional CPEs (equal to the number of CPEs purchased) by completing optional self-study courses. Self-study materials will be available in modules of 2 CPEs and 4 CPEs (taxation and A&A). Summary of CPEs available at this program: Live Group study= 24 CPEs; Self-Study= 16 CPEs for a total of 40 CPEs.

**Please tell us how you would like to receive your self-study materials: (CHECK ONE)**

☐ On-line access to self-study courses in a PDF format  
☐ Mail self-study courses to you prior to the conference

**NOTE: SELF-STUDY MATERIALS WILL NOT BE DISTRIBUTED AT THE CONFERENCE.**

## FULL REFUND OF ALL CHARGES ON OR BEFORE MARCH 1, 2026

**Hotel Cancellation:** Refunds for hotel cancellations will be made, **IN FULL**, if cancellation is made in writing **on or before March 1, 2026**. **No hotel refunds after March 1, 2026**. Any cancellations on or before March 1, 2026 must be made in writing and emailed to [conferences@nticpe.com](mailto:conferences@nticpe.com) or faxed to [888-552-9749](tel:888-552-9749). **No refunds for early departures.**

**Conference Cancellation Policy:** Conference fee will be refunded in full only if notice is received in writing **on or before March 1, 2026**. With respect to a cancellation occurring **after March 1, 2026**, no conference fee refund shall be granted for the conference fee but credit will be given toward a future conference. This policy applies to the conference fee only and not to hotel costs.

**On March 1, 2026, I authorize NTI to charge my credit card noted above for the balance of the hotel package.**

Signed: \_\_\_\_\_

**CALL 888-515-3674 (Extension 1), fax to 888-552-9749 (or email [conferences@nticpe.com](mailto:conferences@nticpe.com)) and register by credit or debit card (MC/Visa)**

Please: Fax this form to 888-552-9749, or  
Email this form to: [conferences@nticpe.com](mailto:conferences@nticpe.com), or  
Mail this form to: NTI Conferences, PO Box 375, Burlington, MA 01803

For more information, please visit our website at: [www.nticpe.com](http://www.nticpe.com).

12-18-25 REV

**CALL 888-515-3674 (Extension 1) or FAX 888-552-9749 or  
EMAIL: [conferences@nticpe.com](mailto:conferences@nticpe.com)**